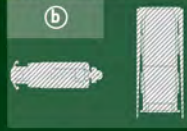
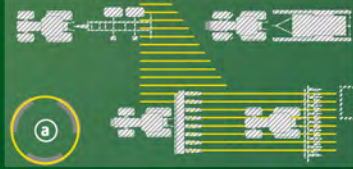


# BOOTH PLAN

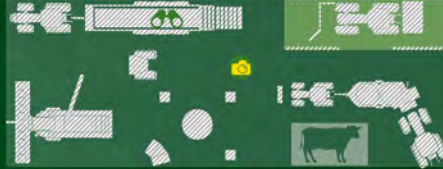
## CROP CARE



## CORN: PREPARE, PLANT, NURTURE, PROTECT



## CORN: HARVEST, HANDLE & FEED



## GRASS: MOWING & BALING



## GRASS: HARVEST, HANDLE & FEED



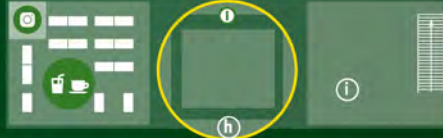
## DIGITAL PRECISION AG TECHNOLOGY SOLUTIONS

## LIFECYCLE SOLUTIONS & KRAMER

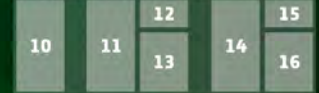


## LANDSCAPING & GROUNDS CARE

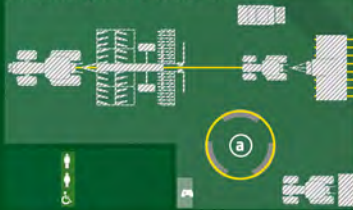
## DEALER GERMANY I



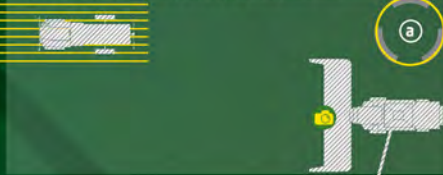
## DEALER GERMANY II



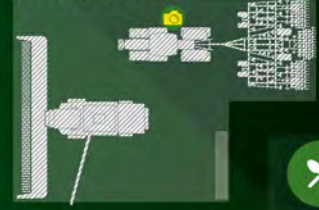
## SMALL GRAINS: PREPARE, SEED, NURTURE



## SMALL GRAINS: PROTECT & HARVEST



## SMALL GRAINS: HARVEST & TILLAGE



- Ⓐ Precision AG
- Ⓑ Mazzotti / Hagie
- Ⓒ Kramer Lounge
- Ⓓ Kramer
- Ⓔ Fanshop
- Ⓕ John Deere Power Systems
- Ⓖ John Deere Financial
- Ⓗ Stage
- Ⓘ Lounge
- Ⓛ Booth Tours
- Ⓜ Info + Recruiting
- Ⓝ Viewing platform
- Ⓞ Meeting area
- Ⓟ Social media corner
- Ⓠ Farming Simulator
- Ⓡ Information material
- Ⓢ Photo point

## DEALER GERMANY I

- 1 | D.O.B. Landtechnik AG
- 2 | Hawart OMV Landtechnik GmbH
- 6 | Knoblauch Landtechnik GmbH
- 4 | Kotschenreuther Forst- und Landtechnik GmbH & Co. KG
- 5 | REBO Landmaschinen GmbH
- 7 | S&L Connect
- 9 | Südbayerische Landtechnik GmbH
- 3 | Tiemann Landtechnik GmbH & Co. KG
- 8 | Zürn GmbH & Co. KG

## DEALER GERMANY II

- 14 | Deppe & Stücker GmbH
- 15 | Hermann Wagener Landmaschinen
- 13 | Josef Greving Landmaschinen e.K.
- 10 | Landtechnik LVA Brandenburg GmbH
- 11 | LVD Bernard Krone GmbH
- 16 | Robert Aebi Landtechnik GmbH
- 12 | Schwarz GmbH Landtechnik-Ökotech Vertrieb & Fischer Landmaschinen GmbH



JOHN DEERE

NOTHING RUNS LIKE A DEERE